

**AVISON
YOUNG**

Office Suite For Lease
SkyCenter One
5411 SkyCenter Drive
Tampa, FL 33607

Highlights

- Suite 900 | 31,660 RSF
- Full top floor available
- Phenomenal views
- Signage opportunity on building garage
- Ideally located in Westshore submarket at Tampa International Airport

Get more information

Clay Witherspoon

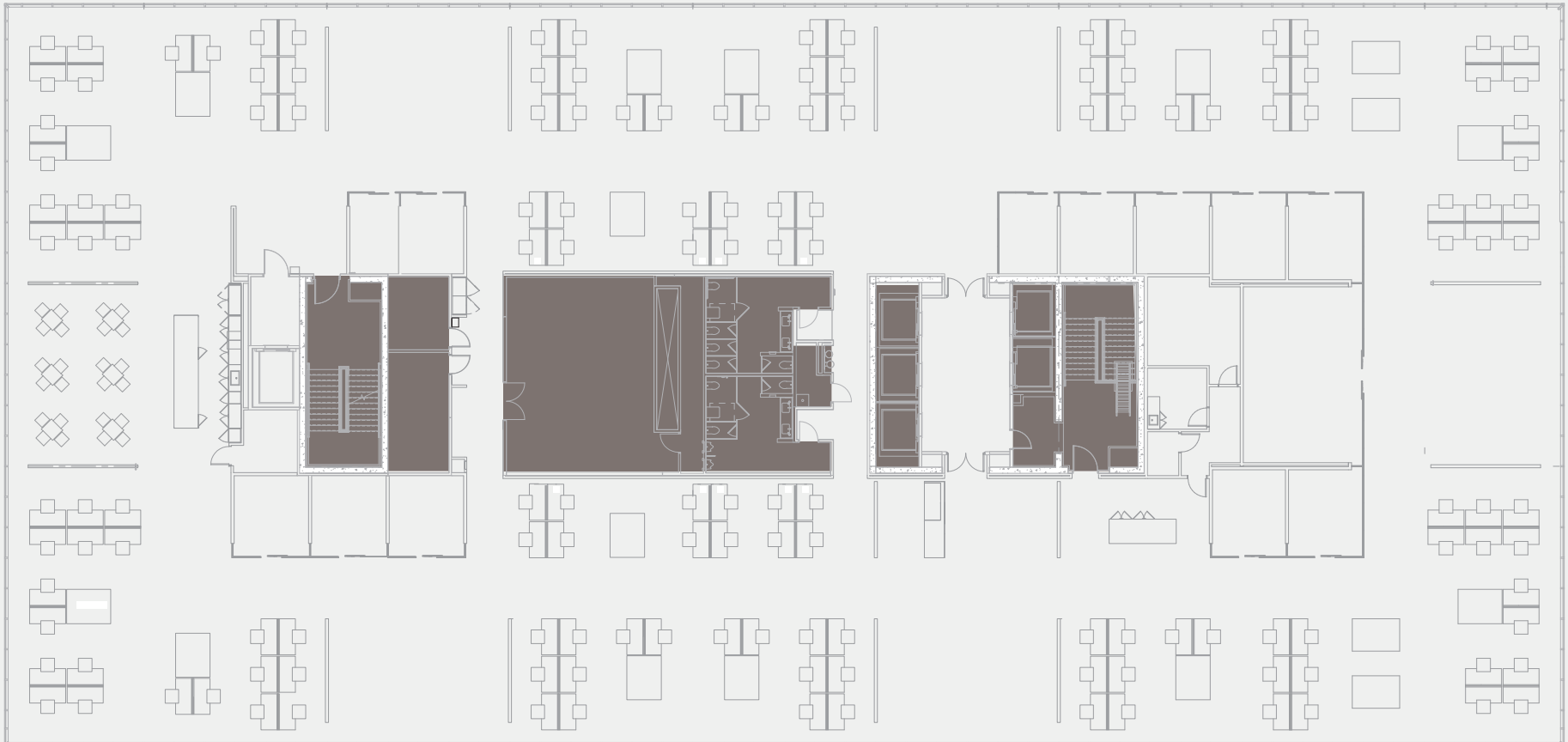
Managing Director | Principal
+1 813 444 0626
clay.witherspoon@avisonyoung.com

Laurie Hynes

Sr. Client Services Coordinator
+1 813 444 0621
laurie.hynes@avisonyoung.com

avisonyoung.com





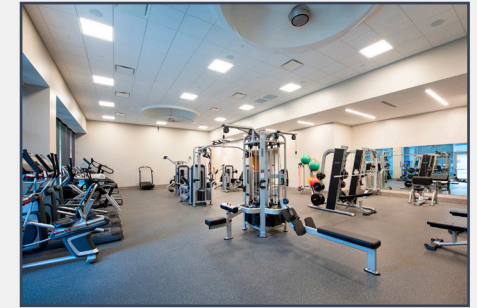
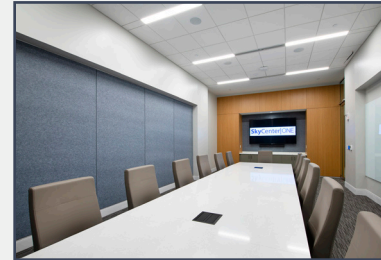
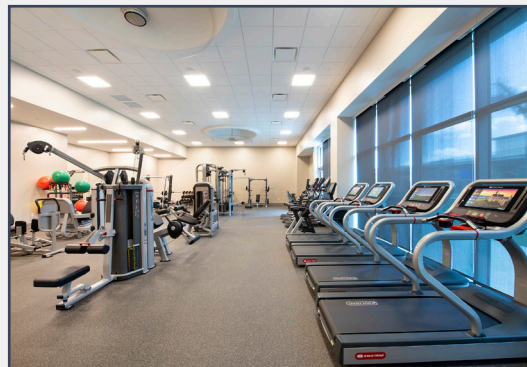
furniture shown is for illustrative purposes only

Suite 900
31,660 sf

- Mix of open area for workstations and open collaboration areas
- 9 huddle rooms/ offices
- 2 phone rooms
- Conference room
- Open break area
- Storage
- IT room
- Wellness/mother's room

SkyCenter Amenities & Features

- Conference Center with seating for up to 100
- Executive board room with seating for up to 16
- State of the art fitness center with locker rooms and towel service
- Nature's Table cafe serving breakfast and lunch
- LEED Platinum certified
- 4/1000 covered parking
- 55 EV charging stations
- Visitor parking



- Monitored on-site security
- Terminal access via SkyConnect tram - 10 minutes from desk to terminal
- Floor to ceiling glass
- Dual power feed
- Class 4 building construction
- Two regional malls within 1 mile radius
- Wellness walking trail
- 15,000 sf rooftop terrace on Atrium